

ORDINANCE OF THE LAPORTE COUNTY
BOARD OF COMMISSIONERS

NO. 94-19

WHEREAS, the Board of Commissioners of LaPorte County is responsible for formulating County Road policy consistent with the Statutes of the State of Indiana; and,

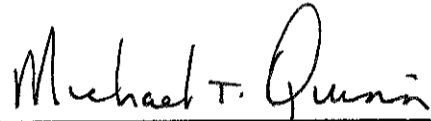
WHEREAS, the Board of Commissioners of LaPorte County recognize that a hazardous situation exists and have decided, therefore, that it is necessary to establish a thirty (30) miles per hour speed zone on C.R. 300 S. between St. Rd. 4 and C.R. 300 E. in Pleasant Township; and,

WHEREAS, the Board of Commissioners of LaPorte County have the authority under Indiana Code 9-21-5-6 to establish the rate of speed on designated roadways;

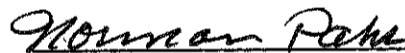
IT IS THEREFORE ORDAINED:

1. That pursuant to Indiana Code 9-21-5-6 it shall be unlawful for any vehicle to exceed thirty (30) miles per hour on C.R. 300 S. from its interesection with St. Rd. 4 to the intersection of said road with C.R. 300 E. in Pleasant Township;
2. That the LaPorte County Highway Department is hereby directed and ordered to post said road with signs indicating thirty (30) miles per hour;
3. That after the roadway has been posted in accordance with paragraph 2, herein, it shall be an infraction under Indiana Code 9-21-5-13 for any person to violate this ordinance.

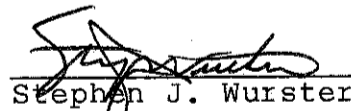
BOARD OF COUNTY COMMISSIONERS
LAPORTE COUNTY, INDIANA



Michael T. Quinn, President

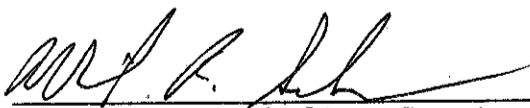


Norman E. Pahs

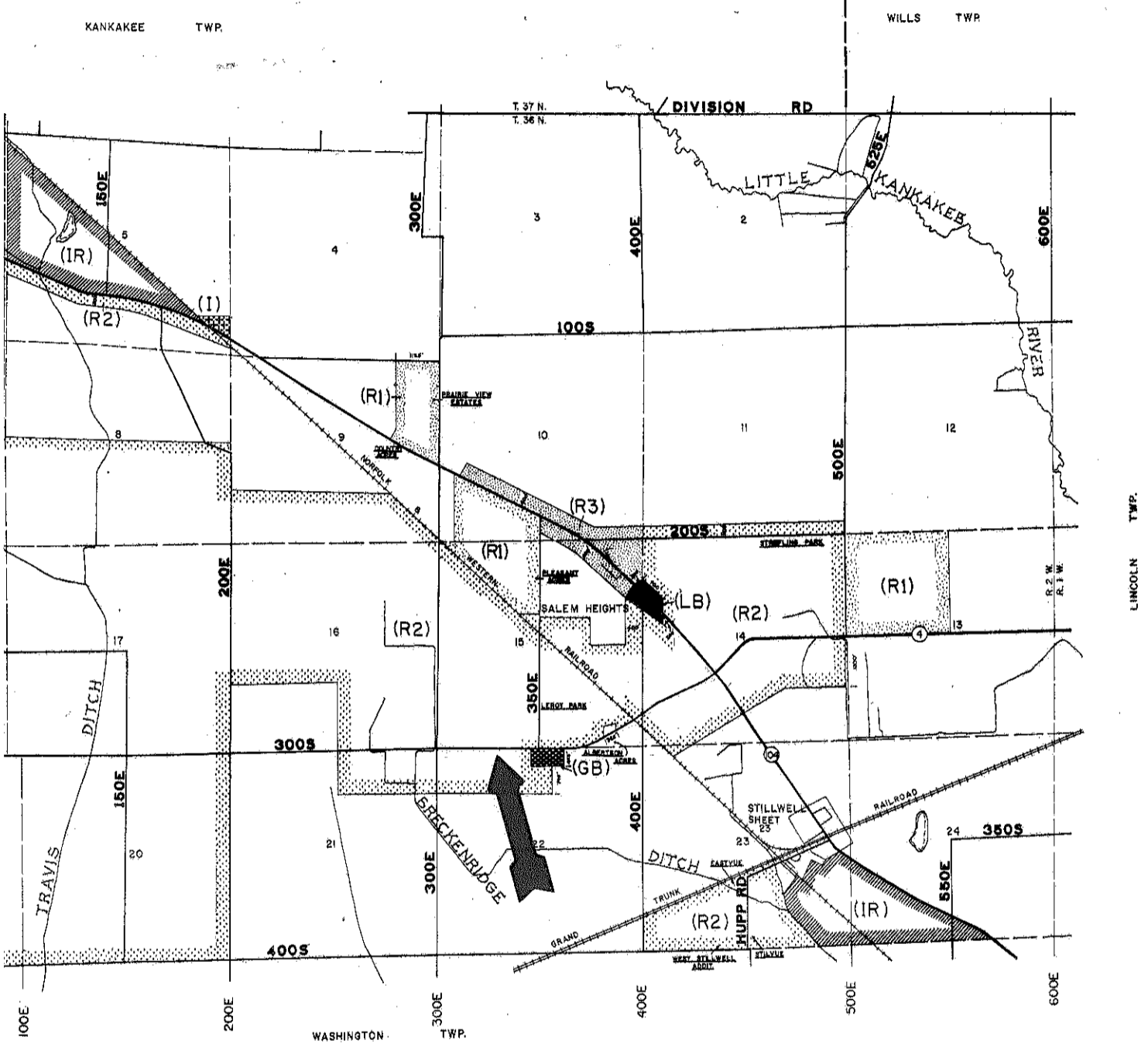


Stephen J. Wurster

Passed this 6th day of September, 1994.

Attest: 
Michael R. Schultz, County Auditor

Please publish two (2) times in the Michigan City News-Dispatch and the LaPorte Herald-Argus on Tuesday, September 13, 1994 and Tuesday, September 20, 1994.

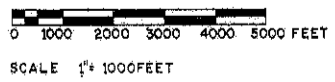


SECTION

19
18
17
16
15
14
13
12
11
10
9

LEGEND

- A AGRICULTURE
- R1 RESIDENTIAL
- R2 RESIDENTIAL
- R3 RESIDENTIAL
- AB ACCOMMODATION BUSINESS
- LB LOCAL BUSINESS
- GB GENERAL BUSINESS
- SC SHOPPING CENTER
- I INDUSTRIAL
- IR INDUSTRIAL RESERVE



PLEASANT TOWNSHIP

LAPORTE COUNTY, INDIANA

ZONING MAP

1978

